



Mounted Division of the Public Order Police Service

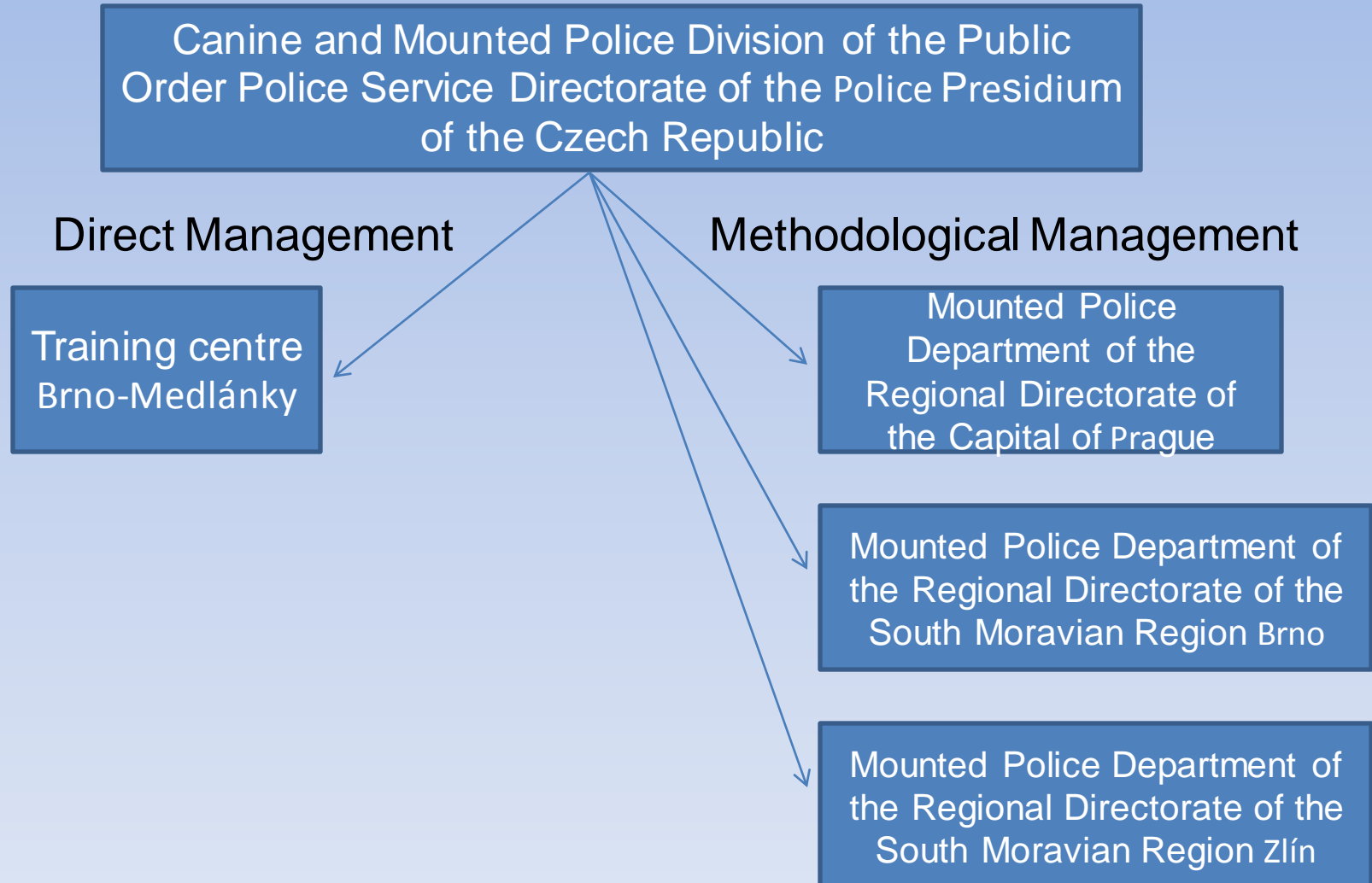
Contains:

1. History of the mounted police
2. Organisational structure of the Mounted Police within the Police of the Czech Republic
3. Organisation, tasks and use of service horses at the Police of the Czech Republic

History of the mounted police

- Mounted police unit in Prague was created in the occasion of the Czechoslovakian general exhibition held in 1991 as the continuation of the tradition which was before the 2. world war, when several units of the mounted police were located at the territory of the Capital of Prague.
- Mounted police unit was created as the part of the public order police service in order to secure the patrol service in the inaccessible terrain in suburbs of Prague, in parks, woods and recreation areas.
- In the very beginning this unit had to lend horses from small breeders. Aprox. 20 police officers-riders performed their service with 11 service horses.

Organisational structure of the Mounted Police of the Police of the Czech Republic



Training Centre Brno – Medlánky

- Carries on the training of police officers-riders with service horses by means of basic, training and special courses for instructors. Instructors of the training centre also secure advanced courses which are held in the single mounted police departments.
- After successful passing these courses service horses are awarded by the categories of the practical use – „guarding service horse“, „service horse for special tasks “. The police officers-riders get „Certificate of ability for riding the service horse “.
- Besides preparation and training of police officers-riders with service horses the training centre secures withdrawal and exchange of service horses for the performance of service at the Police of the Czech Republic.

Categories of the practical use of service horses at the Police of the Czech Republic

- „guarding service horse“ = service horse, which is able to carry on common tasks in terrain and in road traffic
- „service horse for special tasks “ = service horse, which is designated not only for patrol service, but also for special tasks concerning protection of public order mainly during its huge disturbance.

Race used by the Police of the Czech Republic

Czech Warm-Blood



*

Mounted Police within the Public Order Police

- 36 service horses has been currently use for the public order police service, they are stabled at the Mounted Police Department of the Capital of Prague, Mounted Police Department of the South Moravian Region in Brno and Mounted Police Department of the South Moravian Region in Zlín.
- Police officers-riders perform their service not only in their territories but also in other places of the Czech Republic, if the safety situation requires.

Police officers and service horses of the mounted police departments are used mainly for:

- patrol service,
- securing of safety of persons and property,
- searching for wanted and missing persons,
- protection of public order during sport and cultural events
- interventions under joint command during not allowed gatherings of persons and extremists or extremist groups,
- representation of the Police of the Czech Republic.

Use of coercive mean „crushing out by a horse“

- is amended by § 52 letter i) of the law No. 273/2008 Coll., on the Police of the Czech Republic
- police officer is authorisd to use the crushing out by a horse mainly for stopping progress of crowd, decreasing agression or dispersion of persons breaking public order

Ways of use of the coercive mean „crushing out by a horse“

- during the intervention under the joint command it is possible to use mounted police as follows:
 - cordons in direct contact – they are used to stop the crowd and to decrease the aggressivity of the higher number of disturbers of public order, who are in the proximity of police officers
 - opening the space – it is used if it is necessary to separate a part of the crowd
 - dispersion of crowd – if it is necessary to disperse the crowd which was stopped by the police
 - crushing out – it is used for crushing out the disturbers of public order, who did not create the unified crowd

Use of service horese during actions of the mass nature



Competitions of mounted police units



Special traffic means for transportation of service horses



Mounted police department of the Regional Directorate of the Capital of Prague

